

# 1.10.4 Installation of outdoor unit Model FDC71VNX-W

<b>PSC012D127A</b>
Inverter driven split PAC
71VNX-W
Designed for R32 refrigerant

Ⓞ This installation manual deals with outdoor units and general installation specifications only. For indoor units, refer to the respective installation manuals supplied with the units.  
 Ⓞ When install the unit, be sure to check whether the selection of installation place, power source specifications, usage limitation (piping length, height differences between indoor and outdoor units, power source voltage and etc.) and installation spaces.

## SAFETY PRECAUTIONS

- We recommend you to read this "SAFETY PRECAUTIONS" carefully before the installation work in order to gain full advantage of the functions of the unit and to avoid malfunction due to mishandling.
- The precautions described below are divided into **WARNING** and **CAUTION**. The matters with possibilities leading to serious consequences such as death or serious personal injury due to erroneous handling are listed in the **WARNING**, and the matters with possibilities leading to personal injury or damage of the unit due to erroneous handling including probability leading to serious consequences in some cases are listed in **CAUTION**. **These are very important precautions for safety. Be sure to observe all of them without fail.**
- The meaning of "Marks" used here are as shown below.
 

	Never do it under any circumstance.
	Always do it according to the instruction
- Units of single phase power source are equipment complying with IEC61000-3-12.
- Be sure to confirm no anomaly on the equipment by commissioning after completed installation and explain the operating methods as well as the maintenance methods of this equipment to the user according to the owner's manual.
- Keep the installation manual together with owner's manual at a place where any user can read at any time. Moreover if necessary, ask to hand them to a new user.

## Check before installation work

- Model name and power source
- Refrigerant piping length
- Piping, wiring and miscellaneous small parts
- Indoor unit installation manual

	<b>WARNING</b>
<p> <b>Installation must be carried out by the qualified installer.</b> If you install the system by yourself, it may cause serious trouble such as water leaks, electric shocks, fire and personal injury, as a result of a system malfunction.</p> <p> <b>Install the system in full accordance with the instruction manual!</b> Incorrect installation may cause burns, personal injury, water leaks, electric shocks and fire.</p> <p> <b>Use the correct pipe and correct components for installation.</b> If parts other than those prescribed in the instruction manual are used, it may cause fall of the unit, water leaks, electric shocks, fire, refrigerant leak, substantial performance, control failure and personal injury.</p> <p> <b>When installing in small rooms, take prevention measures not to exceed the density limit of refrigerant in the event of leakage</b> Consult the expert about prevention measures. If the density of refrigerant exceeds the limit in the event of leakage, lack of oxygen can occur, which can cause serious accidents.</p> <p> <b>Ventilate the working area well in the event of refrigerant leakage during installation.</b> If the refrigerant comes into contact with naked flames, poisonous gas is produced.</p> <p> <b>After completed installation, check that no refrigerant leaks from the system.</b> If there are any leaks, stop the work immediately and contact the dealer.</p> <p> <b>Use the unit at the specified location with pipes which can support the weight in lifting for portage. And to avoid jolting out of alignment, be sure to hang up the unit at 4-point support.</b> An improper manner of portage such as 2-point support can cause death or serious personal injury due to falling of the unit.</p> <p> <b>Install the unit in a location with good support.</b> Unsuitable installation locations can cause the unit to fall and cause material damage and personal injury.</p> <p> <b>Ensure the unit is stable when installed, so that it can withstand earthquakes and strong winds.</b> Unsuitable installation locations can cause the unit to fall and cause material damage and personal injury.</p> <p> <b>The electrical installation must be carried out by the qualified electrician in accordance with "the norm for electrical work" and "national wiring regulation", and the system must be connected to the dedicated circuit.</b> Power source with insufficient capacity and incorrect function done by improper work can cause electric shocks and fire.</p> <p> <b>Be sure to shut off the power before starting electrical work.</b> Failure to shut off the power can cause electric shocks, unit failure or incorrect function of equipment.</p> <p> <b>Be sure to use the cables conformed to safety standard and cable ampacity for power distribution work.</b> Unconformable cables can cause electric leak, anomalous heat production or fire.</p> <p> <b>Use the prescribed cables for electrical connection, tighten the cables securely in terminal block and relieve the cables correctly to prevent</b> Loose connections or cable mountings can cause anomalous heat production or fire.</p> <p> <b>Arrange the wiring in the control box so that it cannot be pushed up further into the box. Install the service panel correctly.</b> Incorrect installation may result in overheating and fire.</p> <p> <b>Do not perform brazing work in the airtight room</b> It can cause lack of oxygen.</p> <p> <b>Use the prescribed pipes, flare nuts and tools for R32 and R410A.</b> Using existing parts (for R22 or R407C) can cause the unit failure and serious accidents due to burst of the refrigerant circuit.</p>	<p> <b>Tighten the flare nut by using double spanners and torque wrench according to prescribed method. Be sure not to tighten the flare nut too much.</b> Over-tightening on the flare part by tightening with excess torque can cause burst or refrigerant leaks which may result in lack of oxygen.</p> <p> <b>Do not open the service valves for liquid line and gas line until completed refrigerant piping work, air tightness test and evacuation.</b> If the compressor is operated in state of opening service valves before completed connection of refrigerant piping work, you may incur frost bite or injury from an abrupt refrigerant outflow and air can be sucked into refrigerant circuit, which can cause burst or personal injury due to anomalously high pressure in the refrigerant.</p> <p> <b>Only use prescribed optional parts. The installation must be carried out by the qualified installer.</b> If you install the system by yourself, it can cause serious trouble such as water leaks, electric shocks, fire.</p> <p> <b>Do not perform any change of protective device itself or its setup condition</b> Ineffective device of pressure switch and temperature control or the use of non specified component can cause fire or burst.</p> <p> <b>Be sure to switch off the power source in the event of installation, inspection or servicing.</b> If the power source is not shut off, there is a risk of electric shocks, unit failure or personal injury due to the unexpected start of fan.</p> <p> <b>Consult the dealer or an expert regarding removal of the unit.</b> Incorrect installation can cause water leaks, electric shocks or fire.</p> <p> <b>Stop the compressor before closing valve and disconnecting refrigerant pipes in case of pump down operation.</b> If disconnecting refrigerant pipes in state of opening service valves before compressor stopping, you may incur frost bite or injury from an abrupt refrigerant outflow and air can be sucked, which can cause burst or personal injury due to anomalously high pressure in the refrigerant circuit.</p> <p> <b>Be sure to wear protective goggles and gloves while at work.</b></p> <p> <b>This unit is designed specifically for R32.</b> Using any other refrigerant can cause unit failure and personal injury.</p> <p> <b>Ensure that no air enters in the refrigerant circuit when the unit is installed and removed.</b> If air enters in the refrigerant circuit, the pressure in the refrigerant circuit becomes too high, which can cause burst and personal injury.</p> <p> <b>Do not touch the unit with removed panels or protrusions</b> Touching rotating equipments, hot surfaces or high voltage parts can cause personal injury due to entrapment, burn or electric shocks.</p> <p> <b>Be sure to fix up the service panels.</b> Incorrect fixing can cause electric shocks or fire due to intrusion of dust or water.</p> <p> <b>Do not perform any repairs or modifications by yourself. Consult the dealer if the unit requires repair.</b> If you repair or modify the unit, it can cause water leaks, electric shocks or fire.</p> <p> <b>Do not process or splice the power cord, or share the socket with other power plugs.</b> This may cause fire or electric shock due to deflecting contact, deflecting insulation and over-current etc.</p> <p> <b>Do not bundle or wind or process the power cord. Do not deform the power cord by treading it.</b> This may cause fire or heating.</p>

**CAUTION**

**Do not use the base frame for outdoor unit which is corroded or damaged due to long periods of operation.**  
Using an old and damaged base frame can cause the unit falling down and cause personal injury.

**Do not install the unit in the locations listed below**

- Locations where carbon fiber, metal powder or any powder is floating.
- Locations where any substances that can affect the unit such as sulphide gas, chloride gas, acid and alkaline can occur.
- Venues and ships
- Locations where any flammable or special sprays are often used.
- Locations with direct exposure of oil mist and steam such as kitchen and machine plant.
- Locations where any machines which generate high frequency harmonics are used.
- Locations with salty atmospheres such as coastlines
- Locations with heavy snow if installed, be sure to provide base frame and snow hood mentioned in the manual
- Locations at high altitude (more than 1 000m by snow)
- Locations with ammoniac atmospheres (e.g. organic fertilizer)
- Locations with calcium chloride (e.g. snow melting agent)
- Locations where heat radiation from other heat sources can affect the unit
- Locations where vibration can be amplified and transmitted due to insufficient strength of structure.
- Locations where vibration and operation sound generated by the outdoor unit can affect seriously, (on the wall or at the place near bed room)
- Locations where an equipment affected by high harmonics is placed, (TV set or radio receiver is placed within 5m)
- Locations where drainage cannot run or safely.
- Locations which affect surrounding environment and cause a claim.

**Do not use the unit for special purposes such as storing foods, coding precision instruments and preservation of animals, plants or art.**  
It can cause remarkable decrease in performance, corrosion and damage of components, malfunction and fire.

**Do not install the outdoor unit in the locations listed below.**

- Locations where asperger hot air or operating sound of the outdoor unit can bother neighborhood.
- Locations where vibration can be amplified and transmitted due to insufficient strength of structure.
- Locations where vibration and operation sound generated by the outdoor unit can affect seriously, (on the wall or at the place near bed room)
- Locations where an equipment affected by high harmonics is placed, (TV set or radio receiver is placed within 5m)
- Locations where drainage cannot run or safely.
- Locations which affect surrounding environment and cause a claim.

**Do not use the unit for special purposes such as storing foods, coding precision instruments and preservation of animals, plants or art.**  
It can cause remarkable decrease in performance, corrosion and damage of components, malfunction and fire.

**Do not touch any refrigerant pipes with wet hands**  
It can cause electric shocks.

**Do not touch any refrigerant pipes with your hands when the system is in operation.**  
During operation the refrigerant pipes become extremely hot or extremely cold depending on the operating condition, and it can cause burn injury or frost injury.

**Do not clean up the unit with wet water**  
It can cause electric shocks.

**Do not operate the outdoor unit with any article placed on it.**  
You may incur property damage or personal injury from a fall of the article.

**Do not step onto the outdoor unit.**  
You may incur injury from a drop of fall.

**Do not touch the suction or aluminum fin on the outdoor unit.**  
This may cause injury.

**CAUTION**

**Carry out the electrical work for ground lead with care**  
Do not connect the ground lead to the gas line, water line, lightning conductor, or telephone line's ground lead. Incorrect grounding can cause unit faults such as electric shocks due to short-circuiting. Never connect the grounding wire to a gas pipe because if gas leaks it could cause explosion or fire.

**Use the circuit breaker for all jobs with correct capacity.**  
Using the incorrect circuit breaker, it can cause the unit malfunction and fire.

**Install isolator or disconnect switch on the power source wiring in accordance with the local codes and regulations.**  
The isolator should be located in accordance with E1621204-1.

**Take care when carrying the unit by hand.**  
The unit is heavy and should be carried by two or more persons. Do not carry by the plastic straps, always use the carry handle when carrying the unit by hand. Use the lifting points to minimize the risk of falls by the aluminum fins.

**Dispose of any packing materials correctly.**  
Any remaining packing materials can cause personal injury as it contains nails and wood. And to avoid danger of suffocation, be sure to keep the plastic wrapper away from children and to dispose after tear it up.

**Pay attention not to damage the drain pan by weld spatter when welding work is done near the indoor unit.**  
If weld spatter entered into the indoor unit during welding work, it can cause pin-hole in drain pan and result in water leakage. To prevent such damage, keep the indoor unit in its packaging or cover it.

**Be sure to insulate the refrigerant pipes so as not to condense the ambient air moisture on them.**  
Insufficient insulation can cause condensation, which can lead to moisture damage on the ceiling, floor, furniture and any other variables.

**Be sure to perform air tightness test by pressurizing with nitrogen gas after completed refrigerant piping work.**  
If the density of refrigerant exceeds the limit in the event of refrigerant leakage in the small room, lack of oxygen can occur, which can cause serious accidents.

**From the start of work, pay attention to the necessary safety measures.**  
If safety facilities are not provided, it can cause personal injury due to falling from the installation place.

**After maintenance, all wiring, wiring ties and the like, should be returned to their original state and wiring route, and the necessary clearance from all metal parts should be secured.**

**Earth leakage breaker must be installed**  
If the earth leakage breaker is not installed, it can cause fire or electric shocks.

**Do not use any materials other than a fuse with the correct rating in the location where fuses are to be used.**  
Connecting the circuit with copper wire or other metal thread can cause unit failure and fire.

**Do not install the unit near the location where leakage of combustible gases can occur.**  
If leaked gases accumulate around the unit, it can cause fire.

**Do not install the unit where corrosive gas (such as sulfuric acid gas etc.) or combustible gas (such as thinner and petroleum gases) can condense or collect or where water condenses.**  
Corrosive or combustible gas can cause the substrate of the unit to be damaged, and combustible gas can cause fire.

**Secure a space for installation, inspection and maintenance specified in the manual.**  
Insufficient space can result in accident such as personal injury due to falling from the installation place.

**When the outdoor unit is installed on a roof or a high place, provide permanent ladders and handrails along the access route and handrails around the outdoor unit.**  
If safety facilities are not provided, it can cause personal injury due to falling from the installation place.

**Do not install nor use the system close to the equipment that generates electromagnetic fields or high frequency harmonics**  
Equipment such as inverters, standby generators, medical high frequency equipments and telecommunication equipments can affect the system, and cause malfunctions and breakdowns. The system can also affect medical equipment and telecommunication equipment, and destruct its function or cause jamming.

**Do not install the outdoor unit in a location where insects and small animals can inhabit.**  
Insects and small animals can enter the electric parts and cause damage of fire. Instruct the user to keep the surroundings clean.

**Notabilia as a unit designed for R410A**

- Do not use any refrigerant other than R32. R32 will rise to pressure about 1.6 times higher than that of a conventional refrigerant (R22 or R407C).
- A cylinder containing R32 has a light blue indication mark on the top.
- The processed dimension of the flared part of a refrigerant pipe and a flare nut's parallel side measurement have also been altered to raise strength against pressure. Accordingly, you are required to arrange dedicated R32 tools listed in the table on the right before installing or servicing this unit.
- Do not use a charge cylinder. The use of a charge cylinder will cause the refrigerant composition to change, which results in performance degradation.
- In charging refrigerant, always take it out from a cylinder in the liquid phase.
- All indoor units must be models designed exclusively for R32. Check connectable indoor unit models in a catalog, etc. (A wrong indoor unit, if connected into the system, will impair proper system operation.)

a)	Gauge manifold	Dedicated R32 and R410A tools
b)	Charge hose	
c)	Electronic scale for refrigerant charging	
d)	Torque wrench	
e)	Flare tool	
f)	Protrusion control copper pipe gauge	
g)	Vacuum pump adapter	
h)	Gas leak detector	

## 1. HAULAGE AND INSTALLATION (Take particular care in carrying in or moving the unit, and always perform such an operation with two or more persons.)

**CAUTION**

When a unit is hoisted with slings for haulage, take into consideration the offset of its gravity center position. If not properly balanced, the unit can be thrown off-balance and fall.

Pad  
Wooden pallet

- 1) Delivery**
  - Deliver the unit as close as possible to the installation site before removing it from the packaging.
  - When some compelling reason necessitates the unpacking of the unit before it is carried in, use nylon slings or protective wood pieces so as not to damage the unit by ropes lifting it.
- 2) Portage**
  - The right hand side of the unit as viewed from the front (diffuser side) is heavier. A person carrying the right hand side must take heed of this fact. A person carrying the left hand side must hold with his right hand the handle provided on the front panel of the unit and with his left hand the corner column section.

- 108 -

### 3) Selection of installation location for the outdoor unit

- Be sure to select a suitable installation place in consideration of following conditions.
- A place where it is horizontal, stable and can endure the unit weight and will not allow vibration transmittance of the unit.
  - A place where it can be free from possibility of bothering neighbors due to noise or exhaust air from the unit.
  - A place where the unit is not exposed to oil splashes.
  - A place where it can be free from danger of inflammable gas leakage.
  - A place where drain water can be disposed without any trouble.
  - A place where the unit will not be affected by heat radiation from other heat source.
  - A place where the unit can be kept away from TV, radio, etc.
  - A place where the unit can be kept away from TV set and/or radio receiver in order to avoid any radio or TV interference.
  - A place where the unit can be secured, and enough service space can be secured for maintenance and service of the unit safely.
  - A place where the unit will not be affected by electromagnetic waves and/or high-harmonic waves generated by other equipment.
  - A place where the unit will not be affected by sulfuric gas, chlorine gas, acid and alkali (including ammonia), which can harm the unit, will not be generated and not remain.
  - A place where strong wind will not blow against the outlet air blow of the unit.
  - A place where strong wind will not blow against the inlet air blow of the unit.
  - A place where the unit is placed in places which exposed to sea breeze (e.g. coastal area) or calcium chloride (e.g. snow melting agent), exposed to ammonia substance (e.g. organic fertilizer).

### 4) Caution about selection of installation location

- The bottom plate of unit and intake, outlet may be blocked by snow.
- (1) If the unit is installed in the area where the snow will accumulate, following measures are required.
    1. Install the unit on the base so that the bottom is higher than snow cover surface.
    2. Provide a snow hood to the outdoor unit on site. Regarding outline of a snow hood, refer to our technical manual.
    3. Install the unit under eaves or provide the roof on site.

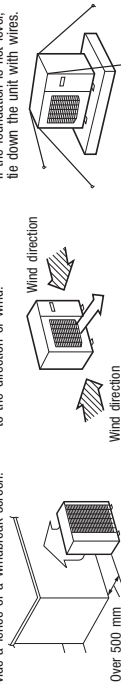


Since drain water generated by defrost control may freeze, following measures are required.

- Don't execute drain piping work by using a drain elbow and drain grommets (optional parts). [Refer to DRAIN PIPING WORK.]
- Recommend setting Defrost Control (SW3-1) and Snow Guard Fan Control (SW3-2). [Refer to Setting SW3-1, SW3-2.]
- Attach heater on a base plate on site, if there is possibility to freeze drain water.

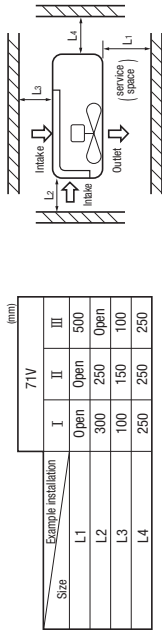
In case that the product has a corrective drainage system, the drainage paths should have suitable measure against freezing but be sure not to melt the material of drainage paths with heat.

- (2) If the unit can be affected by strong wind, following measures are required. Strong wind can cause damage of fan (fan motor), or can cause performance degradation, or can trigger anomalous stop of the unit due to rising of high pressure.
  1. Install the outlet air blow side of the unit to face a wall of building, or provide a fence or a windbreak screen.
  2. Install the outlet air blow side of the unit in a position perpendicular to the direction of wind.
  3. The unit should be installed on the stable and level foundation. If the foundation is not level, tie down the unit with wires.



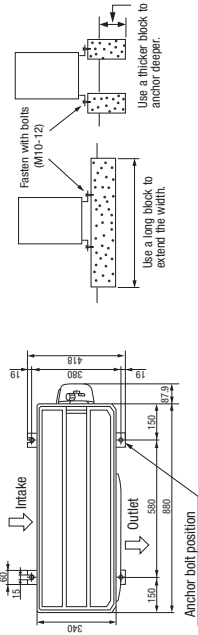
### 5) Installation space

- Walls surrounding the unit in the four sides are not acceptable.
- There must be a 1-meter or larger space in the above.
- When more than one unit are installed side by side, provide a 250mm or wider interval between them as a service space. In order to facilitate servicing of controls, please provide a sufficient space between units so that their top plates can be removed easily.
- Where a danger of short-circuiting exists, install guide louvers.
- When more than one unit are installed, provide sufficient intake space consciously so that short-circuiting may not occur.
- Where piping show can bury the outdoor unit, provide proper snow guards.
- A barrier wall placed in front of the exhaust diffuser must not be higher than the unit.



### 6) Installation

- ① Anchor bolt fixed position
- ② Notability for installation



- In installing the unit, fix the unit's legs with bolts specified on the above.
- The protrusion of an anchor bolt on the front side must be kept within 15 mm.
- Securely install the unit so that it does not fall over during earthquakes or strong winds, etc.
- Refer to the above illustrations for information regarding concrete foundations.
- Install the unit in a level area. (With a gradient of 5 mm or less.)
- Improper installation can result in a compressor failure, broken piping within the unit and abnormal noise generation.

### 7) To run the unit for a cooling operation, when the outdoor temperature is -5°C or lower.

- When the outdoor air temperature is -5°C or lower, provide a snow hood to the outdoor unit on site. So that strong wind will not blow against the outdoor heat exchanger directly. Regarding outline of a snow hood, refer to our technical manual.

## 2. REFRIGERANT PIPING WORK

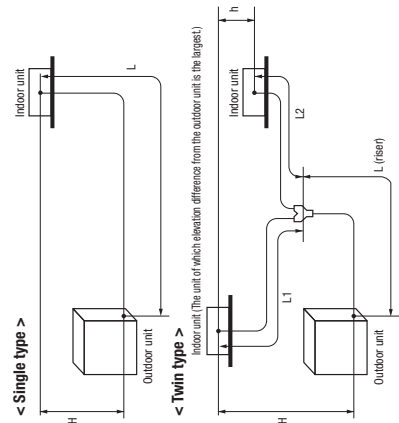
### 1) Restrictions on unit installation and use

- Check the following points in light of the indoor unit specifications and the installation site.
- Observe the following restrictions on unit installation and use. Improper installation can result in a compressor failure or performance degradation.

Descriptions	Dimensional limitations	Marks appearing in the drawing	
		Single type	Twin type
One-way pipe length of refrigerant piping	≤50m	L	L+L1+L2
Main pipe length	≤50m	—	L
One-way pipe length after the first branching point	≤20m	—	L1, L2
One-way pipe length difference from the first branching point to the indoor unit	≤10m	—	L1-L2
Elevation difference between indoor and outdoor units	≤30m	H	H
	When the outdoor unit is positioned higher, When the outdoor unit is positioned lower.	—	—
Elevation difference between indoor units	≤0.5m	—	h

● The use restrictions appearing in the table above are applicable to the standard pipe size combinations shown in the table below. Where an existing pipe system is utilized, different one-way pipe length restrictions should apply depending on its pipe size. For more information, please see "6. UTILIZATION OF EXISTING PIPING."

### CAUTION



## 2) Determination of pipe size

- Determine refrigerant pipe size pursuant to the following guidelines based on the indoor unit specifications.

	Model 71V	
	Gas pipe	Liquid pipe
Outdoor unit connected	φ15.88	φ9.52
	Flare	Flare
Refrigerant piping (Main pipe L)	φ15.88	φ9.52
	φ15.88	φ9.52
In the case a single type	Model 71V	
Indoor unit connected	DIS-WA1	
Capacity of indoor unit	φ12.7	
Branching pipe set	φ9.52	
Refrigerant piping (branch pipe L1 L2)	φ12.7	
In the case a twin type	φ12.7	
Indoor unit connected	φ6.35	
Capacity of indoor unit	Model 40V x2	

**CAUTION** ● When the 40V model is connected as an indoor unit, always use a φ9.52 liquid pipe for the branch (branching pipe – indoor unit) and a different diameter joint supplied with the branching pipe set for connection with the indoor unit (φ6.35 on the liquid pipe side).

- If a φ6.35 pipe is used for connection with a branching pipe, a refrigerant distribution disorder may occur, causing one of the indoor units to fall short of the rated capacity.
- A riser pipe must be a part of the main. A branching pipe set should be installed horizontally at a point as close to an indoor unit as possible.
- A branching part must be dressed with a heat-insulation material supplied as an accessory.
- For the details of installation work required at and near a branching area, see the installation manual supplied with your branching pipe set.

## 3) Refrigerant pipe wall thickness and material

- Select refrigerant pipes of the table shown on the right wall thickness and material as specified for each pipe size.

Pipe diameter [mm]	6.35	9.52	12.7	15.88
Minimum pipe wall thickness [mm]	0.8	0.8	0.8	1.0
Pipe material*	O-type pipe	O-type pipe	O-type pipe	O-type pipe

**NOTE** ● Select pipes having a wall thickness larger than the specified minimum pipe thickness.

\*Phosphorus deoxidized seamless copper pipe C1220T, JIS H3300

## 4) On-site piping work

- **IMPORTANT** Take care so that installed pipes may not touch components within a unit. If touching with an internal component, it will generate abnormal sounds and/or vibrations.

### How to remove the side cover

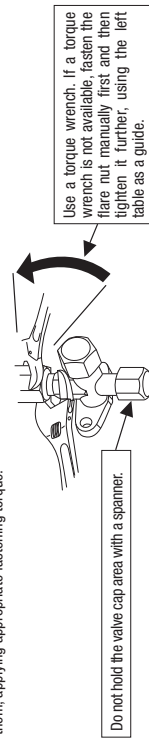
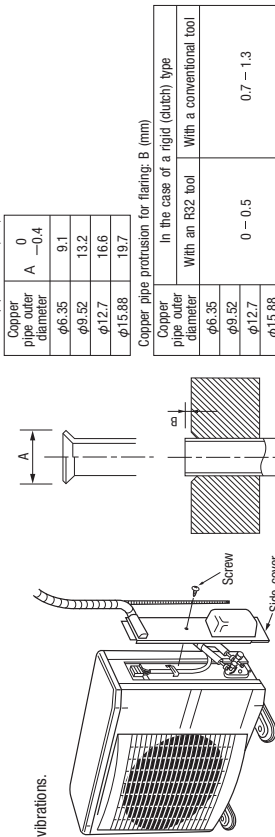
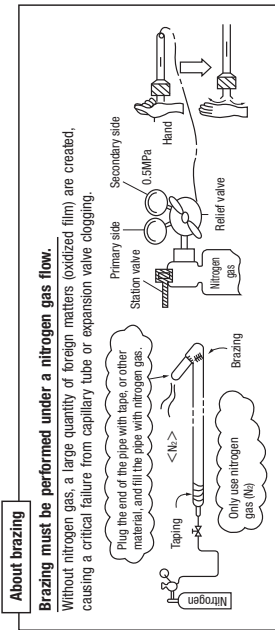
Please remove the screw of a side cover and remove to the front.

- Carry out the on site piping work with the service valve fully closed.
- Give sufficient protection to a pipe end (compressed and blazed, or with an adhesive tape) so that water or foreign matters may not enter the piping.
- Bend a pipe to a radius as large as practical (R100 – R150). Do not bend a pipe repeatedly to correct its form.
- Flare connection is used between the unit and refrigerant pipe. Flare a pipe after engaging a flare nut onto it. Flare dimensions for R32 are different from those for conventional R22 and R407C. Although we recommend the use of flaring tools designed specifically for R32, conventional flaring tools can also be used by adjusting the measurement of protrusion B with a protrusion control gauge.
- The pipe should be anchored every 1.5m or less to isolate the vibration.
- Tighten a flare joint securely with a double spanner.

### CAUTION

**Do not apply force beyond proper fastening torque in tightening the flare nut.** Fix both liquid and gas service valves at the valve main bodies as illustrated on the right, and then fasten them, applying appropriate fastening torque. Do not apply refrigerating machine oil to the flared surface. It can cause refrigerant leakage.

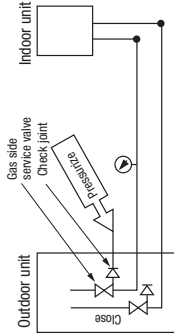
Service valve size (mm)	Tightening torque (N·m)	Tightening angle (°)	Recommended length of a tool handle (mm)
φ6.35 (1/4")	14 – 18	45 – 60	150
φ9.52 (3/8")	34 – 42	30 – 45	200
φ12.7 (1/2")	49 – 61	30 – 45	250
φ15.88(5/8")	68 – 82	15 – 20	300





### 5) Air tightness test

- ① Although outdoor and indoor units themselves have been tested for air tightness at the factory, check the connecting pipes after the installation work for air tightness from the service valve's check joint equipped on the outdoor unit side. While conducting a test, keep the service valve shut all the time.
  - a) Raise the pressure to 0.5 MPa, and then stop. Leave it for five minutes to see if the pressure drops.
  - b) Then raise the pressure to 1.5 MPa, and stop. Leave it for five more minutes to see if the pressure drops.
  - c) Then raise the pressure to the specified level (4.15 MPa), and record the ambient temperature and the pressure.
  - d) If no pressure drop is observed with an installation pressurized to the specified level and left for about one day, it is acceptable. When the ambient temperature fall 1 °C, the pressure also fall approximately 0.01 MPa. The pressure, if changed, should be compensated for.
  - e) If a pressure drop is observed in checking e) and a) - d), a leak exists somewhere. Find a leak by applying bubble test liquid to welded parts and flare joints and repair it. After repair, conduct an air-tightness test again.
- ② In conducting an air-tightness test, use nitrogen gas and pressurize the system with nitrogen gas from the gas side. Do not use a medium other than nitrogen gas under any circumstances.



### 6) Evacuation

<Work flow>

Airtightness test completed

Vacuuming begins

Vacuuming completed

Vacuum gauge check

Fill refrigerant

Run the vacuum pump for at least one hour after the vacuum gauge shows -101kPa or lower (-755mmHg or lower)

Confirm that the vacuum gauge indicator does not rise even if the system is left for one hour or more.

When the system has remaining moisture inside or a leaky point, the vacuum gauge indicator will rise.  
Check the system for a leaky point and then draw air to create a vacuum again.

### 7) Additional refrigerant charge

- (1) Calculate a required refrigerant charge volume from the following table.

Item	Refrigerant volume charged for shipment at the factory (kg)	Installation's pipe length (m) covered without additional refrigerant charge
Capacity	0.054	30
Model 71V	2.75	30

- This unit contains factory charged refrigerant covering 30m of refrigerant piping and additional refrigerant charge on the installation site is not required for an installation with up to 30m refrigerant piping. When refrigerant piping exceeds 30m, additionally charge an amount calculated from the pipe length and the above table for the portion in excess of 30m.
- If an existing pipe system is used, a required refrigerant charge volume will vary depending on the liquid pipe size. For further information, please see "6. UTILIZATION OF EXISTING PIPING."

Additional charge volume (kg) = ( Main pipe length (m) - Length covered without additional charge 30 (m) ) × 0.054 (kg/m) + Total length of branch pipes (m) × 0.054 (kg/m)

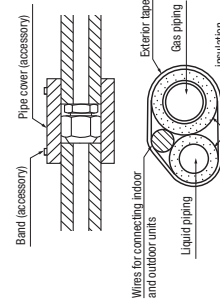
### (2) Charging refrigerant

- Since R32 refrigerant must be charged in the liquid phase, you should charge it, keeping the container cylinder upside down or using a refrigerant cylinder equipped with a siphon tube.
- Charge refrigerant always from the liquid side service port with the service valve shut. When you find it difficult to charge a required amount, fully open the outdoor unit valves on both liquid and gas sides and charge refrigerant from the gas (suction) side service port while running the unit in the cooling mode. In doing so, care must be taken so that refrigerant may be discharged from the cylinder in the liquid phase all the time. When the cylinder valve is throttled down or a dedicated conversion tool to charge liquid-phase refrigerant into mist is used to protect the compressor, however, adjust charge conditions so that refrigerant will gassy upon entering the unit.
- In charging refrigerant, always charge a calculated volume by using a scale to measure the charge volume.
- When refrigerant is charged with the unit being run, complete a charge operation within 30 minutes. Running the unit with an insufficient quantity of refrigerant for a long time can cause a compressor failure.

**NOTE** Put down the refrigerant volume calculated from the pipe length onto the caution label attached on the back side of the service panel.

### 8) Heating and condensation prevention

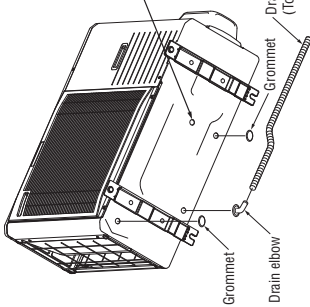
- (1) Dress refrigerant pipes (both gas and liquid pipes) for heat insulation and prevention of dew condensation.
  - Improper heat insulation/anti-dew dressing can result in a water leak or dripping causing damage to household effects, etc.
- (2) Use a heat insulating material that can withstand 120°C or a higher temperature. Poor heat insulating capacity can cause heat insulation problems or cable deterioration.
  - Improper heat insulation/anti-dew dressing can result in a water leak or dripping causing damage to household effects, etc.
  - All gas pipes must be securely heat insulated in order to prevent damage from dripping water that comes from the condensation formed on them during a cooling operation or personal injury from burns because their surface can reach quite a high temperature due to discharged gas flowing inside during a heating operation.
  - Wrap indoor units' flare joints with heat insulating parts (pipe cover) for heat insulation (both gas and liquid pipes).
  - Give heat insulation to both gas and liquid side pipes. Bundle a heat insulating material and a pipe tightly together so that no gaps may be left between them and wrap them together with a connecting cable by a dressing tape.
  - Although it is verified in a test that this air conditioning unit shows satisfactory performance under "JIS condensation test conditions, **both gas and liquid pipes need to be dressed with 20 mm or thicker heat insulation materials above the ceiling where relative humidity exceeds 70%.**



\*When an additional charge volume calculation result is negative, it is not necessary to charge refrigerant additionally.

### 3. DRAIN PIPING WORK

- Execute drain piping by using a drain elbow and drain grommets supplied separately as optional parts, where water drained from the outdoor unit is a problem.
- Water may drip where there is a larger amount of drain water. Seal around the drain elbow and drain grommets with putty or adequate caulking material.
- Condensed water may flow out from vicinity of service valve or connected pipes.
- Where you are likely to have several days of sub-zero temperatures in a row, do not use a drain elbow and drain grommets. (There is a risk of drain water freezing inside and blocking the drain.)
- Do not use drain elbow and grommet made of plastic for drain piping when base heater for outdoor unit is used. Plastic grommet and elbow will be damaged and burnt in worst case.
- Prepare another drain tray made of metallic material for collecting drain when base heater is used.



#### CAUTION

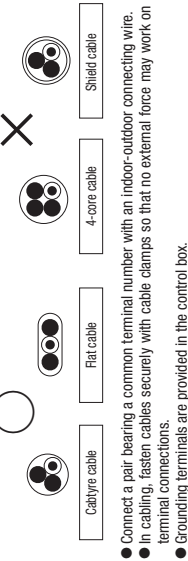
Do not put a grommet on this hole. This is a supplementary drain hole to discharge drain water, when a large quantity of it is gathered.

• When condensed water needs to be led to a drain, etc., install the unit on a flat base (supplied separately as an optional part) or concrete blocks. Then, please secure space for the drain elbow and the drain hose.



### 4. ELECTRICAL WIRING WORK For details of electrical cabling, refer to the indoor unit installation manual.

Electrical installation work must be performed by an electrical installation service provider, qualified by a power provider of the country. Electrical installation work must be executed according to the technical standards and other regulations applicable to electrical installations in the country.



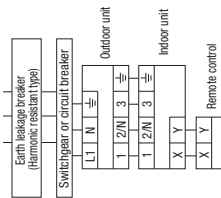
- Connect a pair bearing a common terminal number with an indoor-outdoor connecting wire.
- In cabling, fasten cables securely with cable clamps so that no external force may work on terminal connections.
- Grounding terminals are provided in the control box.

- Do not use any supply cord lighter than one specified in parentheses for each type below.
  - ordinary tough rubber sheathed cord (code designation 60245 IEC 53)
  - flat twin tinsel cord (code designation 60227 IEC 41);
- Do not use anything lighter than polychloroprene sheathed flexible cord (code designation 60245 IEC57) for supply cords of parts of appliances for outdoor use.
- Ground the unit. Do not connect the grounding wire to a gas pipe, water pipe, lightning rod or telephone grounding wire.
- If improper grounded, an electric shock or malfunction may result.
- A grounding wire must be connected before connecting the power cable. Provide a grounding wire longer than the power cable.
- The installation of an impulse withstanding type earth leakage breaker is necessary. A failure to install an earth leakage breaker can result in an accident such as an electric shock or a fire.
- Do not turn on the power until the electrical work is completed.
- Do not use a condensive capacitor for power factor improvement under any circumstances. (It dose not improve power factor, while it can cause an abnormal overheat accident)
- For power supply cables, use conduits.
- Do not lay electronic control cables (remote control and signaling wires) and other cables together outside the unit. Laying them together can result in the malfunctioning or a failure of the unit due to electric noises.
- Fasten cables so that may not touch the piping, etc.
- When cables are connected, make sure that all electrical components within the electrical component box are free of loose connector coupling or terminal connection and then attach the cover securely. (Improper cover attachment can result in malfunctioning or a failure of the unit, if water penetrates into the box.)
- Always use a three-core cable for an indoor-outdoor connecting cable. Never use a shield cable.

#### Power cable, indoor-outdoor connecting wires

- Always perform grounding system installation work with the power cord unplugged.
- Connect a pair bearing a common terminal number with an indoor-outdoor connecting wire.
- In cabling, fasten cables securely with cable clamps so that no external force may work on terminal connections.
- Grounding terminals are provided in the control box.

Always use an earth leakage circuit breaker designed for inverter circuits to prevent a faulty operation.



Model	Power source	Power cable thickness (mm)	MAX. over current (A)	Cable length (m)	Grounding wire thickness	Indoor-outdoor wire thickness number
71V	Single phase 3 wire 220-240V 50Hz 220V 60Hz	3.5	20	17	φ1.6mm	φ1.6mm x 3

- The specifications shown in the above table are for units without heaters. For units with heaters, refer to the installation instructions or the construction instructions of the indoor unit.
- Switchgear or circuit breaker capacity which is calculated from MAX. over current should be chosen along the regulations in each country.
  - (a) Power source cable: Use the cable which is conformed with 60245 IEC57. When selecting the power source cable length, make sure that voltage drop is less than 2%. If the wire length gets longer, increase the wire diameter.
  - (b) Indoor-Outdoor connecting wires: Use the wires which is conformed with 60245 IEC57.

Main fuse specification

Model	Specification	Part No.
71V	250V 20A	SSA564A117

## 5. TEST RUN

### ⚠ WARNING

- Before conduct a test run, make sure that the service valves are open.
- Turn on power 6 hours prior to a test run to energize the crank case heater.
- During this operation, refrigerant may accumulate in the compressor and earth leakage breaker may be activated.
- In case of the first operation after turning on power, even if the unit does not move for 30 minutes, it is not a breakdown.
- Always give a 3-minute or longer interval before you start the unit again whenever it is stopped.
- Removing the service panel will expose high-voltage live parts and high-temperature parts, which are quite dangerous. Take utmost care not to incur an electric shock or burns. Do not leave the unit with the service panel open.

### ⚠ CAUTION

- When you operate switches for on-site setting, be careful not to touch a live part.
- You cannot check discharge pressure from the liquid service valve charge port.
- The 4-way valve (Z/S) is energized during a heating operation.
- When power source is cut off to reset the unit, give 3 or more minutes before you turn on power again after power is cut off. If this procedure is not observed in turning on power again, "E-5" (Communication error) may occur.

### About insulation resistance

- An insulation resistance value may drop to several M ohms immediately after installation or when the unit is left for a long time without power, because refrigerant is gathered in the compressor. When the earth-leakage breaker is actuated due to low insulation resistance, please check the following:
  - (1) Check whether a normal insulation resistance value is restored about 6 hours after power is turned. Turning on power will energize the compressor and heat it to evaporate refrigerant gathered in it.
  - (2) Check whether the earth-leakage breaker is a harmonic resistant type.
 This unit is equipped with an inverter and therefore, the use of a harmonic resistant type earth-leakage breaker is necessary to prevent a false actuation.

### 1) Test run method

#### Please remove a side cover.

- (1) A test run can be initiated from an outdoor unit by using SW5-3 and SW5-4 for on-site setting.
- (2) Switching SW5-3 to ON will start the compressor.
- (3) The unit will start a cooling operation, when SW5-4 is OFF, or a heating operation, when SW5-4 is ON.
- (4) **Do not fail to switch SW5-3 to OFF when a test run is completed.**

※ In case of the first operation after turning on the power source, when the unit runs in the cooling mode at outside temperature 5°C or lower, it automatically changes into the cooling mode after it runs in the heating mode for 10 minutes.

### 2) Checking the state of the unit in operation

#### Please remove a service panel.

- Use check joints provided on the piping before and after the four-way valve installed inside the outdoor unit for checking discharge pressure and suction pressure.
- As indicated in the table shown on the right, pressure detected at each point will vary depending on whether a cooling or heating operation has been selected.
- | Operation         | Check joint of the pipe gas service valve | Charge part of the gas service valve |
|-------------------|---|--------------------------------------|
| Cooling operation | Discharge pressure (High pressure)        | Suction pressure (Low pressure)      |
| Heating operation | Suction pressure (Low pressure)           | Discharge pressure (High pressure)   |

### 3) Setting SW3-1, SW3-2, SW3-3, SW3-4, on-site.

#### Please remove a service panel.

- (1) Defrost control switching (SW3-1)
  - When this switch is turned ON, the unit will run in the defrost mode more frequently.
  - Set this switch to ON, when installed in a region where outdoor temperature falls below zero during the season the unit is run for a heating operation.
- (2) Snow guard fan control (SW3-2)
  - When this switch is turned on, the outdoor unit fan will run for 30 seconds in every 10 minutes, when outdoor temperature falls to 3°C or lower and the compressor is not running.
  - When the unit is used in a very snowy country, set this switch to ON.
- (3) Lower noise silent mode (SW3-4)
  - Upper limit of compressor speed and fan speed becomes lower in silent mode.

### 4) Failure diagnosis in a test run

Error indicated on the remote control unit	Red LED	Green LED	Failure event	Action
E34	Blinking once	Blinking continuously	Open phase	Check power cables for loose contact or disconnection
E40	Blinking once	Blinking continuously	63HT actuation or operation with service valves shut (occurs mainly during a heating operation)	1. Check whether the service valves are open. 2. If an error has been cancelled when 3 minutes have elapsed since power is supplied, you can start the unit by effecting Check Reset from the remote control unit.
E49	Blinking once	Blinking continuously	Low pressure error or operation with service valves shut (occurs mainly during a cooling operation)	Reset from the remote control unit.

- If an error code other than those listed above is indicated, refer to the wiring diagram of the outdoor unit and the indoor unit.

### 5) The state of the electronic expansion valve.

The following table illustrates the steady states of the electronic expansion valve.

	When power is turned on	When the unit comes to a normal stop	When the unit comes to an abnormal stop
Valve for a cooling operation	Complete shut position	During a cooling operation	During a cooling operation
Valve for a heating operation	Full open position	Complete shut position	During a heating operation
	Full open position	Complete shut position	Full open position

### 6) Heed the following on the first operation after turning on the circuit breaker.

This outdoor unit may start in the standby mode (waiting for a compressor startup), which can continue up to 30 minutes, to prevent the oil level in the compressor from lowering on the first operation after turning on the circuit breaker. If that is the case, do not suspect a unit failure.

A failure to observe these instructions can result in a compressor breakdown.

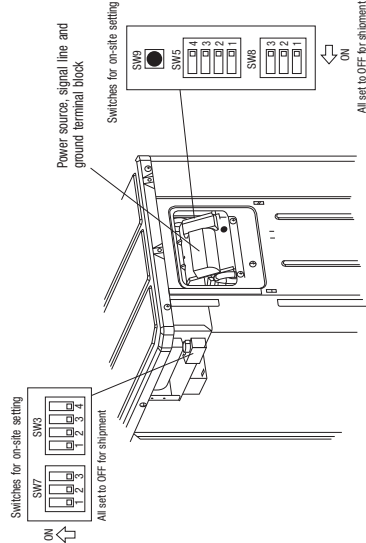
- When you leave the outdoor unit with power supplied to it, be sure to close the panel.

Item to be checked in the operation manual	Item	Check item	Check
2	Refrigerant plumbing	Have all tightness test and vacuum extraction surely performed? Are heat insulation materials installed on both liquid and gas pipes? Are service valves surely opened for both liquid and gas systems? Have you recorded the additional refrigerant charge volume and refrigerant pipe length on the power label? Is the unit free of clogging errors such as uncompleted connection, an absent or reversed phase? Are primary rated electrical equipment used for circuit breakers and cables? Don't a cabling cross-connect between units, where more than one unit is installed? Are all indoor outdoor signal wires connected to remote control wires? Do indoor outdoor connecting cables connect between the same terminal numbers? Are other VCT cables or an ORF for cables used for indoor-outdoor connecting cables?	
4	Electric wiring	Does grounding safety for the 2-type grounding type II grounding requirements? Are cables fixed on loose screws at their connection points? Are cables fixed down with cable clamps so that no external force works on the terminal connections? Is the indoor unit insulation work completed? There is a face cover provided for an indoor unit, is the face cover attached to the indoor unit?	

### Test run procedure

- Always carry out a test run and check the following in order as listed.

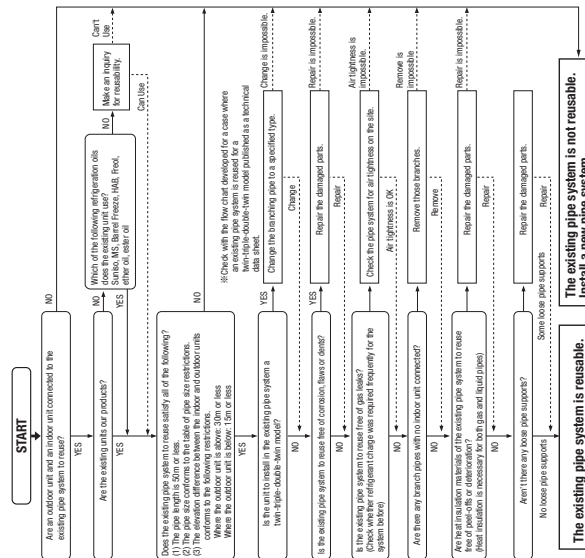
Turn	The contents of operation	Check
(1)	Open the on-site service valve fully.	
(2)	Open the hand defrost service valve fully.	
(3)	Close the panel.	
(4)	When a remote control unit is used for unit check on the installation site, follow instructions for unit check on the installation site with a remote control unit.	
(5)	SW5-3: SW5-4: OFF. The unit will start a cooling operation. SW5-3: SW5-4: ON. The unit will start a heating operation.	
(6)	When the unit starts operation, please turn the wind direction turbo provided on the remote control unit to check its operation.	
(7)	Place your hand before the indoor unit's diffuser to check whether cold/warm winds come out in a cooling/heating operation.	
(8)	Make sure that a red LED is not lighting.	
(9)	When you complete the test run, please turn on SW5-3 for 1 second and the sure to end a test run.	
(10)	When options are used, check their operation according to the respective instruction manuals.	



- ※1 Do not operate SW3-3, SW5-1, SW5-2, SW7, SW8-2, SW8-3.
- ※2 Refer to TECHNICAL MANUAL about SW9. (Pump down SW)

## 6. UTILIZATION OF EXISTING PIPING.

Check whether an existing pipe system is reusable or not by using the following flow chart.



### WARNING

<Where the existing unit can be run for a cooling operation ->

Carry out the following steps with the existing unit (in the order of (1), (2), (3) and (4))

- (1) Run the unit for 30 minutes for a cooling operation.
  - (2) Stop the indoor fan and run the unit for 3 minutes for a cooling operation (returning liquid)
  - (3) Close the liquid side service valve of the outdoor unit and pump down (refrigerant recovery)
  - (4) Blow with nitrogen gas. ※ If discolored refrigeration oil or any foreign matters is discharged by the blow, wash the pipe system or install a new pipe system.
- For the flare nut, do not use the old one, but use the one supplied with the outdoor unit.
  - Process a flare to the dimensions specified for R32.
  - Turn on-site setting switch SW8-1 to the ON position. (Where the gas pipe size is φ 19.05)

### <Table of pipe size restrictions>

◎:Standard pipe size ○:Usable △:Restricted to shorter pipe length limits Cool 1 ; Cooling capacity drop

Pipe Size	Additional charge volume per meter of pipe		71V
	0.054kg/m	0.11kg/m	
Liquid pipe	φ9.52	φ12.7	φ12.7
Gas pipe	φ12.7	φ15.88	φ15.88
Usability	Cool 1	◎	△
Maximum one-way pipe length	35	50	25
Length covered without additional charge	30	30	15

● The pipe length should be at least 5m. If the pipe length is shorter than 5m, the quantity of refrigerant needs to be reduced. Please consult with our distributor in the area, if you need to recover refrigerant and charge it again.

● Any combinations of pipe sizes not listed in the table are not usable.

### <Pipe system after the branching pipe>

◎:Standard pipe size ○:Usable

Pipe Size	Additional charging amount of refrigerant per 1m		71V
	0.054kg/m	0.11kg/m	
Liquid pipe	φ9.52	φ12.7	φ15.88
Gas pipe	φ12.7	φ15.88	φ15.88
Combination type	Combination of capacity		
Twin	40+40	◎	○

● Any combinations of pipe sizes not listed in the table are not usable.

<The model types of existing units of which branching pipes are reusable ->

In case of replacement of used branching pipes, please use our genuine branching pipes.

### Formula to calculate additional charge volume

$$\text{Additional charge volume (kg)} = (\text{Main pipe length (m)} - \text{Length covered without additional charge shown in the table (m)}) \times (\text{Additional charge volume per meter of pipe shown in the table (kg/m)}) + (\text{Total length of branch pipes (m)} \times \text{Additional charge volume per meter of pipe shown in the table (kg/m)})$$

※ If you obtain a negative figure as a result of calculation, no additional refrigerant needs to be charged.  
Example) When an 71V (single installation) is installed in a 30m long existing pipe system (liquid φ12.7, gas φ15.88), the quantity of refrigerant to charge additionally should be (30m-25m) x 0.11kg/m = 0.55 kg.

<Where the existing unit cannot be run for a cooling operation ->

- Wash the pipe system or install a new pipe system.
- If you choose to wash the pipe system, contact our distributor in the area.